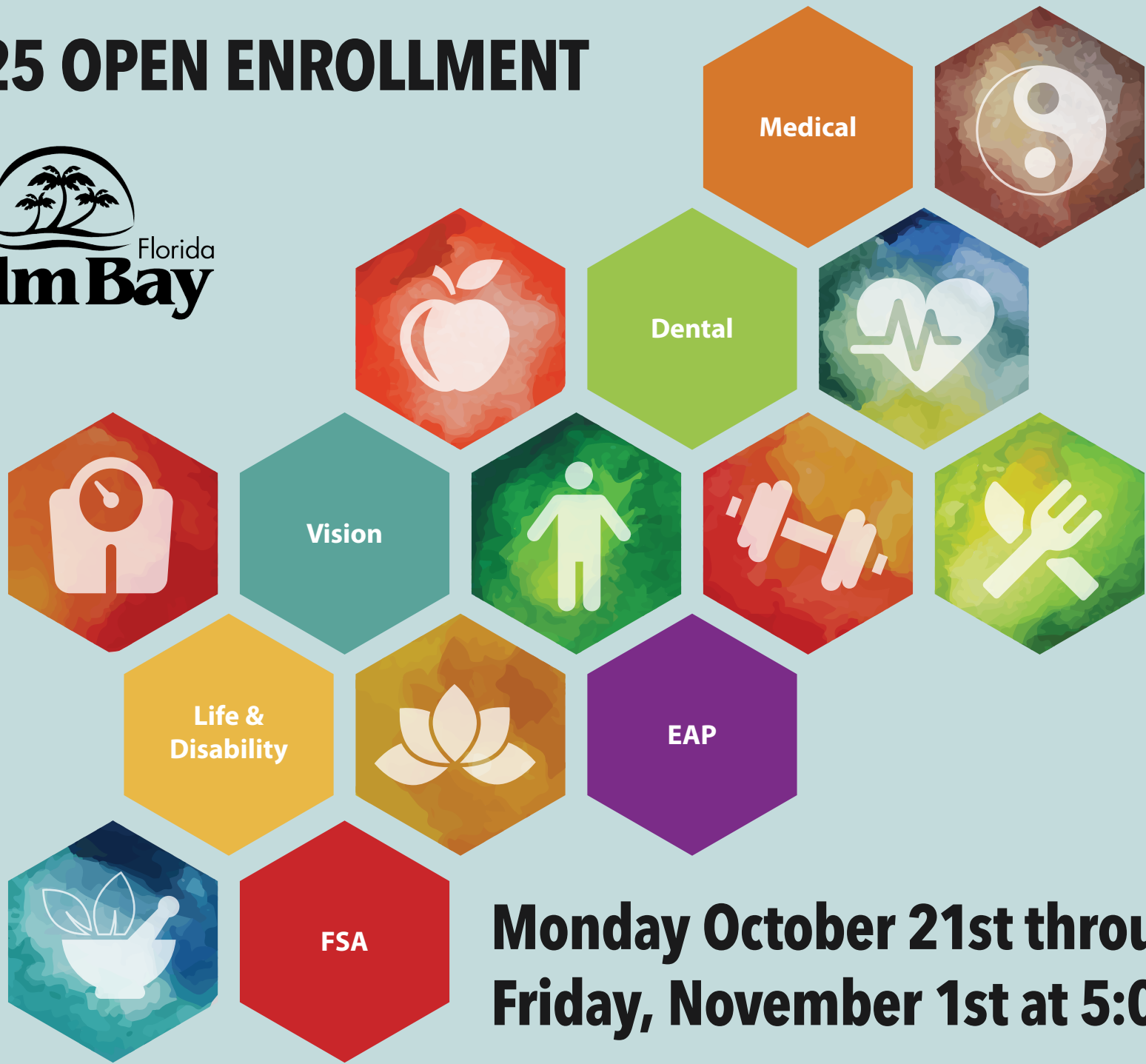


# 2025 OPEN ENROLLMENT



**Monday October 21st through  
Friday, November 1st at 5:00pm**

**Open Enrollment is the time of year when benefit eligible employees can make new benefit elections, or changes to their current elections, for the upcoming 2025 plan year.**

The only carrier changes this year will be to Life and Disability. The Standard will be the new Life & Disability carrier and this year during Open Enrollment employees will have the option to newly elect or increase Voluntary Life coverage without having to complete Evidence of Insurability (EOI). Employees can newly elect or increase coverage up to the GI of \$250,000 for Voluntary Employee Life coverage and \$50,000 for Voluntary Spouse coverage. Employees will also have the option to newly enroll in Short Term Disability without EOI. It is important that everyone logs into Bentek to review their benefits and make any plan changes. If you do not login to Bentek, your current elected coverages will roll over with the exception of the FSA.

**Reminder:** If you are in the FSA plan, you must re-enroll each year. Please attend one of the meetings to learn more information.

## JOIN US FOR A IN PERSON PRESENTATION

DATE	Time	Location
Monday, October 21st	8:00am	Public Works-Operations- Bldg G, 1050 Malabar Road SW
	1:00pm	City Hall, Community Room, Bldg A, 120 Malabar Road SW

*A recorded presentation will be available for those who cannot attend. Computer access will be available following the presentations.*

## ONLINE ENROLLMENT THROUGH BENTEK

**Open Enrollment is online!** Bentek is our internet-based benefits-enrollment system, allowing you to do the following 24 hours-a-day/7 days-a-week during the Open Enrollment period:

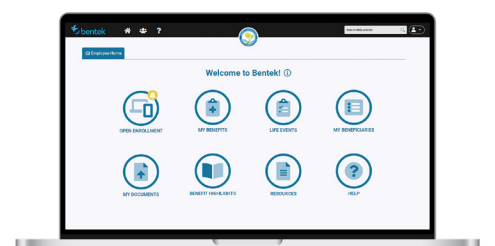
- View all benefit elections and payroll deductions
- Make new elections or changes online
- View plan summaries and link to provider websites
- Designate life insurance beneficiaries

To access the site go to: [app.mybentek.com/palmbayflorida](http://app.mybentek.com/palmbayflorida)

**Bentek Site will be open from Monday October 21st through Friday, November 1st at 5:00pm.**

If you have trouble accessing Bentek, please contact the Bentek Support Line at: [support@mybentek.com](mailto:support@mybentek.com), or: (888) 5-Bentek (523-6835) Monday - Friday 8:30am - 5:00pm EST

**Questions or concerns?** Please contact the Human Resources Department at 321-952-3421 or [Human.Resources@pbfl.org](mailto:Human.Resources@pbfl.org)



To access Bentek using a mobile device, scan code.

